

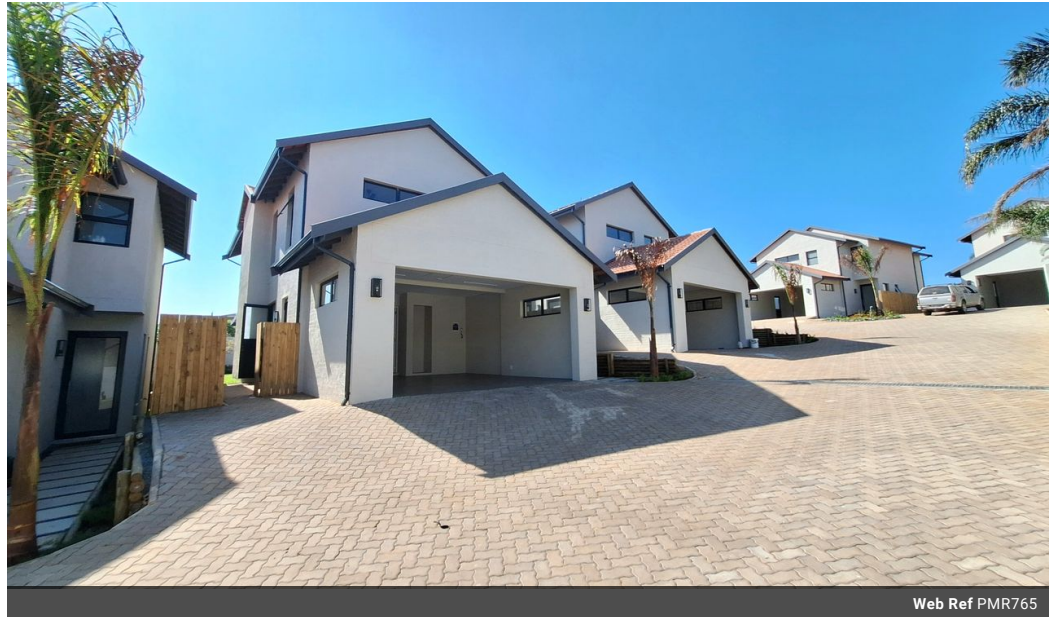


Desiré Momplé
0605874148
desire.momple@kwsa.co.za

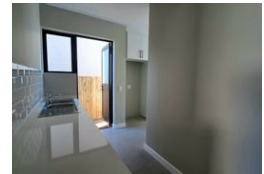
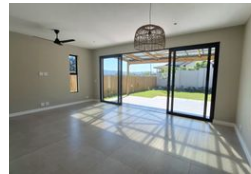
Contact Dolphin Coast

032 9461226

Douglas Crowe Drive, Ballito, 4420 - 14
Silverstone Way



Web Ref PMR765



R29,000 pm

Lease Period 12 months
Annual Escalation -

Availability Immediately

Deposit R28,000

 4  3.5  2

Welcome home to Sheffield Villas

Welcome home to Sheffield Villas, where every detail reflects a commitment to unparalleled quality, elegance, and the ultimate in family living.

Step inside this meticulously designed home to discover spacious interiors flooded with natural light. The 244m² layout encompasses four bedrooms, three and a half bathrooms, and an open-plan lounge and kitchen area, seamlessly connecting indoor and outdoor spaces.

Your private garden oasis awaits, complete with a refreshing plunge pool, perfect for unwinding after a long day.

Whether lounging in the sun-drenched living spaces or taking a refreshing dip in your private plunge pool, Sheffield Villas offers a lifestyle of luxury and comfort.

Strategically located, this exclusive development is just moments away from prestigious schools, pristine beaches, bustling shopping centres,...

Features

Pets Allowed Yes

Interior

Bedrooms 4
Bathrooms 3.5
Kitchens 1
Recep. Rooms 2
Furnished No

Exterior

Garages 2
Carports / Parkings 2
Security Yes
Pool Yes
Views False

Sizes

Floor Size 244m²

Extras

Balcony Electric Fencing Garden