



Desiré Momplé
0605874148
desire.momple@kwsa.co.za

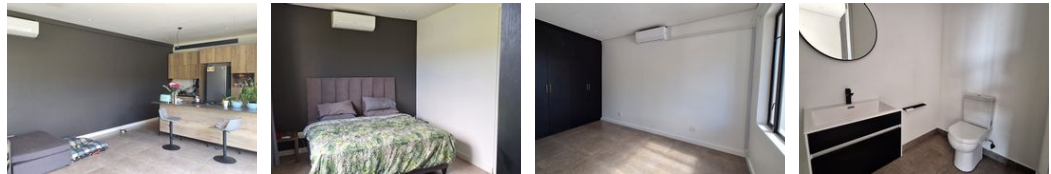
Contact Dolphin Coast

032 9461226

Douglas Crowe Drive, Ballito, 4420 - 14
Silverstone Way



Web Ref PMR966



R20,475 pm

Lease Period 12 months Availability Immediately Deposit -
Annual Escalation -



Elegant Single-Level Home in Elaleni Forest Coastal Estate

Discover the perfect blend of comfort and contemporary living in this beautifully designed single-level home. Featuring an open-plan layout, the kitchen, lounge, and dining areas flow seamlessly onto a private patio and garden, creating an ideal space for relaxation and entertaining.

This home offers two spacious bedrooms, including a main bedroom with an en-suite bathroom for added privacy. Additional features include three air conditioning units and a pet-friendly fenced area. As a resident of Elaleni Forest Coastal Estate, you'll have access to exclusive amenities such as the Forest Boardwalk, Leisure Centre, and a private beach clubhouse.

Available from 1st April 2025.

Don't miss this opportunity—contact me today to arrange an exclusive viewing.

Features

Pets Allowed	Yes			
Interior		Exterior		Sizes
Bedrooms	2	Carports / Parkings	2	Floor Size
Bathrooms	2	Security	Yes	102m ²
Kitchens	1	Pool	Yes	
Recep. Rooms	2	Views	False	
Furnished	No			