

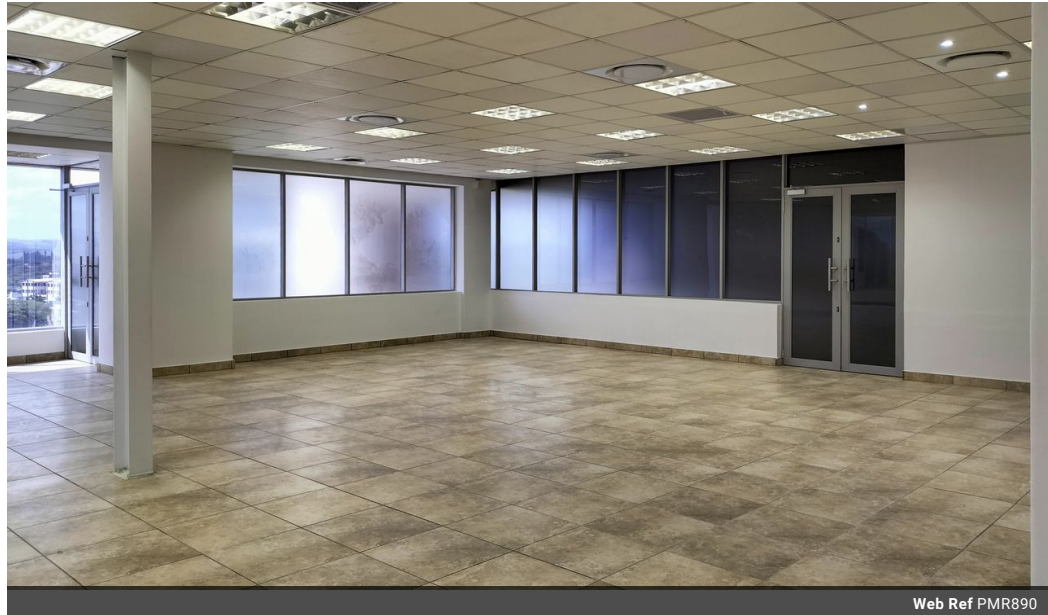


**Una van Jaarsveld**  
 Non-Principal Property Practitioner  
 Registered with PPRA (FFC 115 789 4)  
 0832824495  
 una.van@kwsa.co.za

Contact Dolphin Coast

032 9461226

Douglas Crowe Drive, Ballito, 4420 - 14 Silverstone Way



Web Ref PMR890



R26,130 pm

**Lease Period** 12 months **Availability** Immediately **Deposit** R52,260  
**Annual Escalation** -

 0  0

Amazing Office Space - Second Floor

Check out this fantastic commercial office space, measuring 204 square meters! It's an ideal choice for businesses looking for a vibrant and productive workspace in a top-notch location. The open-plan design offers plenty of flexibility for different office configurations, and two private offices provide a perfect setting for meetings and executive functions.

You'll love the strategic location within a bustling business complex, with easy access to major transport routes like the M4 and N2 highways. This means your employees and clients will enjoy seamless connectivity. Plus, being close to a popular mall and the Lifestyle Centre, you'll have a great selection of retail and dining options just around the corner!

With several business parks nearby, this office is a fantastic hub for networking and growth opportunities. It's a...

Features

<b>Interior</b>		<b>Exterior</b>		<b>Sizes</b>	
Kitchens	1	Carports / Parkings	4	Floor Size	204m <sup>2</sup>
Furnished	No	Security	Yes		
		Pool	No		
		Views	False		