



Desiré Momplé
0605874148
desire.momple@kwsa.co.za

Contact Dolphin Coast

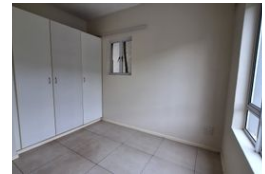
032 9461226

Douglas Crowe Drive, Ballito, 4420 - 14
Silverstone Way

NEW



Web Ref PMR975



R10,815 pm

Lease Period 12 months
Annual Escalation -

Availability Immediately

Deposit -



Ground-Floor Apartment with Pet-Friendly Garden

Discover comfortable living in this spacious 2-bedroom, 2-bathroom ground-floor unit located in the sought-after secure estate of Sheffield Beach.

This well-appointed home comes with two open parking bays and air-conditioning in the main bedroom and lounge. The open-plan layout seamlessly connects the lounge and modern kitchen, creating an inviting space for everyday living. Step outside onto your private undercover patio, overlooking a garden and greenbelt views—perfect for relaxation or entertaining guests.

Pet-friendly (subject to Body Corporate approval).

Available from 1 April 2025.

Enjoy the exceptional lifestyle amenities within the estate, including 24-hour security, a swimming pool, clubhouse, braai area, catch-and-release dams, and a rugby/soccer field—all set within beautifully landscaped gardens.

Don't miss...

Features

Pets Allowed		Exterior		Sizes	
	Yes	Carparks / Parkings	2	Floor Size	72m ²
Interior		Security	Yes		
Bedrooms	2	Pool	No		
Bathrooms	2	Views	False		
Kitchens	1				
Recep. Rooms	1				
Furnished	No				