

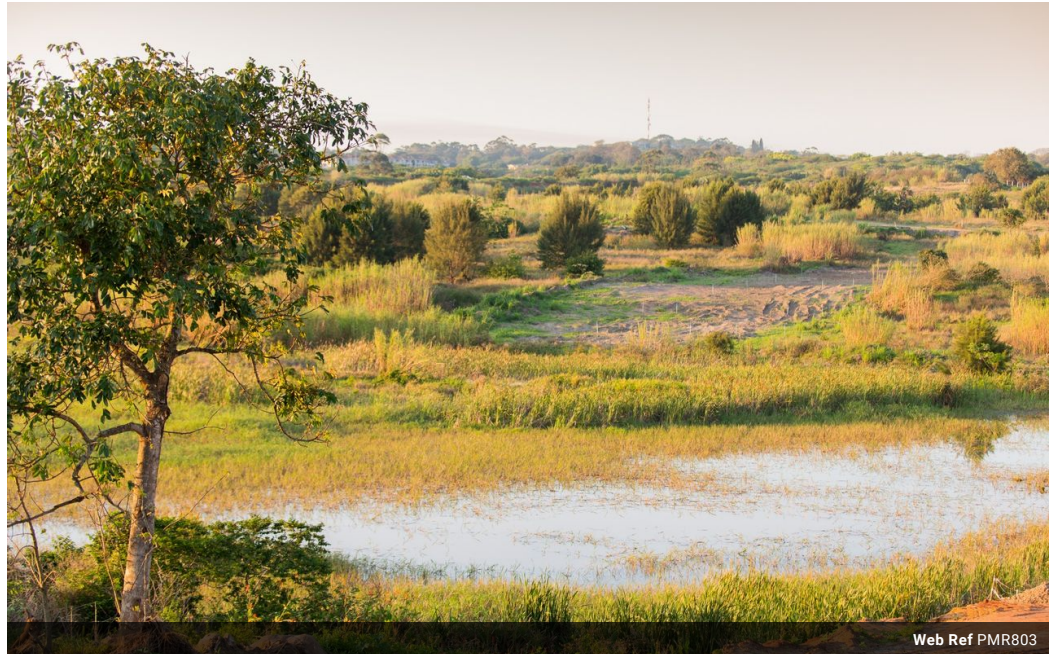


**Una van Jaarsveld**  
 Non-Principal Property Practitioner  
 Registered with PPRA (FFC 115 789 4)  
 0832824495  
 una.van@kwsa.co.za

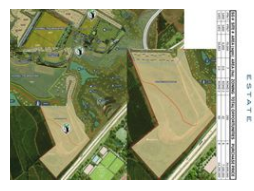
Contact Dolphin Coast

032 9461226

Douglas Crowe Drive, Ballito, 4420 - 14 Silverstone Way



Web Ref PMR803



**R7,180,000**

**Monthly Bond Repayment** R74,111.13  
 Calculated over 20 years at 11% with no deposit.

**Transfer Costs** R659,028.00    **Bond Costs** R75,285.00  
 These calculations are only a guide. Please ask your conveyancer for exact calculations.

**0.6ha Land Available to Develop Up To 42 Units**

Attention all developers! This is an extraordinary opportunity to invest in a renowned and established brand. 0.6ha of land is available to build up to 42 units. Lalela is rapidly taking shape, offering approximately 104 hectares of lush greenery, natural wetlands, 5km of walking trails, and a community clubhouse with exciting amenities. Embrace this opportunity to be part of a new lifestyle on KwaZulu-Natal's North Coast.

Estate facilities include:

- Barbecue facilities
- Kid's club
- Family pools
- Skate park
- Tennis courts
- Cricket nets
- Putt-putt

Don't miss out – call our professional property practitioner now to secure your private viewing.

**Features**