



Una van Jaarsveld
 Non-Principal Property Practitioner
 Registered with PPRA (FFC 115 789 4)
 0832824495
 una.van@kwsa.co.za

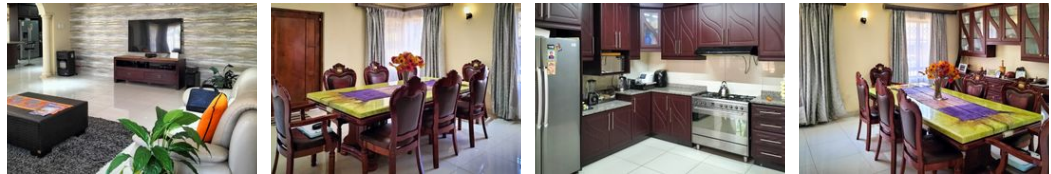
Contact Dolphin Coast

032 9461226

Douglas Crowe Drive, Ballito, 4420 - 14 Silverstone Way



Web Ref PMR860



R6,500,000



Monthly Bond Repayment R67,092.25
 Calculated over 20 years at 11% with no deposit.

Transfer Costs R578,766.00 **Bond Costs** R70,535.00
 These calculations are only a guide. Please ask your conveyancer for exact calculations.

Monthly Rates R2,638.7

Welcome to your dream home!

Welcome to your dream home! Enjoy easy living in this stunning contemporary residence that offers breathtaking views.

This lovely home features four spacious bedrooms and luxurious bathrooms, plus a sleek kitchen that effortlessly connects to the dining area—perfect for family gatherings. The master bedroom is a true retreat, complete with a walk-in robe and ensuite. You'll love the sliding door to the veranda to soak in those amazing views!

Need parking? No problem! The garage can accommodate up to four vehicles, providing plenty of space.

This family-friendly home is close to beautiful beaches, charming cafes, delicious restaurants, shopping centres, and top-notch schools in Ballito on the gorgeous North Coast of KwaZulu-Natal. I would love to show you around, so please get in touch with me today to schedule a viewing

Features

Pets Allowed Yes

Interior
 Bedrooms 4
 Bathrooms 5
 Kitchens 1
 Recep. Rooms 3
 Furnished No

Exterior
 Garages 4
 Carports / Parkings 2
 Security No
 Pool Yes
 Views True

Sizes
 Floor Size 404m²
 Land Size 928m²