



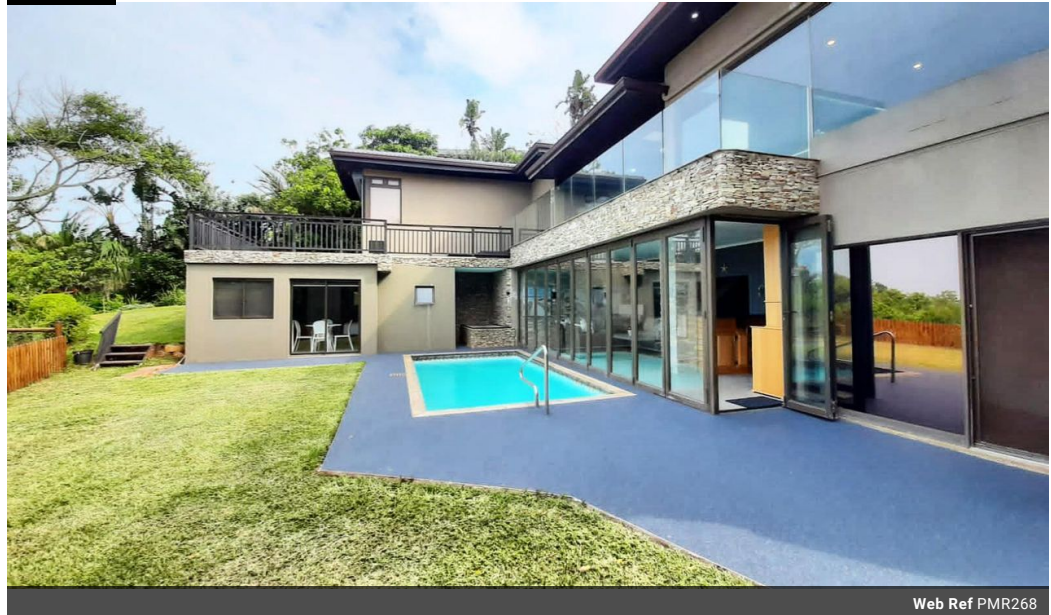
Una van Jaarsveld
 Non-Principal Property Practitioner
 Registered with PPRA (FFC 115 789 4)
 0832824495
 una.van@kwsa.co.za

Contact Dolphin Coast

032 9461226

Douglas Crowe Drive, Ballito, 4420 - 14 Silverstone Way

FEATURED



Web Ref PMR268



R8,500,000

5 5.5 3

Monthly Bond Repayment R87,736.01
 Calculated over 20 years at 11% with no deposit.

Transfer Costs R810,214.00 **Bond Costs** R80,035.00
 These calculations are only a guide. Please ask your conveyancer for exact calculations.

Monthly Levy R3,500 **Monthly Rates** R5,768

Pure Luxury Awaits You

Awe-inspiring and captivating luxury, sweeping and expansive sea views are the constant theme from the moment you enter this exquisite five-bedroom home in a sought-after secure gated estate on the Dolphin Coast of KZN.

Your living areas are open plan and combine modern and sophisticated living to the core. The ultra-modern and spacious kitchen flows seamlessly to your formal/informal lounging areas and dining room. These phenomenal spaces are complimented by high ceilings and expansive glass windows to the most spectacular entertainer's balcony, all of this with the most stunning outlook of the ocean as your ever-changing backdrop.

The accommodation comprises five spacious bedrooms and five and a half bathrooms. The elegant main bedroom is en-suite with a walk-in dressing room and beautiful sea views creating a haven of...

Features

Pets Allowed Yes

Interior

Bedrooms	5
Bathrooms	5.5
Kitchens	2
Recep. Rooms	4
Studies	1
Furnished	No

Exterior

Garages	3
Carports / Parkings	2
Security	Yes
Pool	Yes
Views	True

Sizes

Floor Size	283m ²
Land Size	871m ²

Extras

Balcony, Covered Parking, Pets Allowed, Private Garden, Private Pool, Security, View of Water

