



Desiré Momplé
0605874148
desire.momple@kwsa.co.za

Contact Dolphin Coast

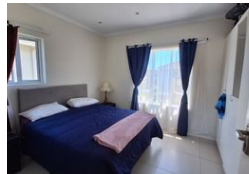
032 9461226

Douglas Crowe Drive, Ballito, 4420 - 14
Silverstone Way

NO TRANSFER DUTY



Web Ref PMR976



R1,200,000



Monthly Bond Repayment R12,386.26
Calculated over 20 years at 11% with no deposit.

Transfer Costs R32,749.00 **Bond Costs** R25,220.00

These calculations are only a guide. Please ask your conveyancer for exact calculations.

Monthly Levy R1,200 **Monthly Rates** R600

Charming Two-Bed Top Floor Apartment

Discover this well-designed two-bedroom, one-bathroom apartment located in a sought-after, secure complex just 2km from the beach.

The open-plan layout seamlessly connects the kitchen and lounge to a private balcony, creating an inviting space for relaxation and entertainment. The modern kitchen features granite countertops and ample storage. Both bedrooms are generously sized with built-in cupboards.

The property includes one parking bay with additional visitor parking available. Pets are welcome with Body Corporate approval.

Residents enjoy 24-hour security and top-tier amenities, including a swimming pool, clubhouse, braai area, catch-and-release dams, and a rugby/soccer field, all set within beautifully maintained gardens.

A tenant is in place until 30 September 2025, making this an excellent investment...

Features

Interior

| | |
|--------------|----|
| Bedrooms | 2 |
| Bathrooms | 1 |
| Kitchens | 1 |
| Recep. Rooms | 1 |
| Furnished | No |

Exterior

| | |
|---------------------|-------|
| Carports / Parkings | 1 |
| Security | Yes |
| Pool | Yes |
| Views | False |

Sizes

| | |
|------------|------------------|
| Floor Size | 64m ² |
|------------|------------------|