



Desiré Momplé  
0605874148  
desire.momple@kwsa.co.za

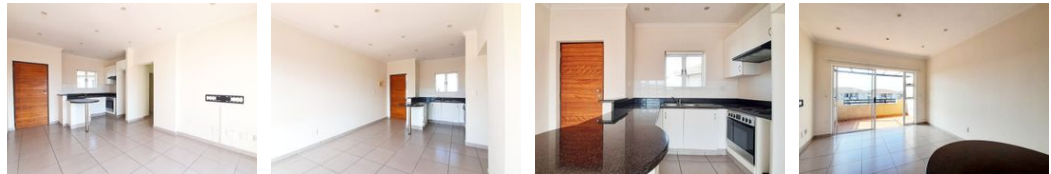
Contact Dolphin Coast

032 9461226

Douglas Crowe Drive, Ballito, 4420 - 14  
Silverstone Way



Web Ref PMR888



R1,350,000



**Monthly Bond Repayment** R13,934.54  
Calculated over 20 years at 11% with no deposit.

**Transfer Costs** R39,117.00    **Bond Costs** R27,105.00

These calculations are only a guide. Please ask your conveyancer for exact calculations.

**Monthly Levy** R1,300    **Monthly Rates** R650

### Chic Two-Bedroom Top-Floor Apartment in Sheffield Manor Estate

Discover this charming two-bedroom top-floor unit in the sought-after Sheffield Manor, now available for sale!

This inviting residence boasts open plan living areas, well-sized bedrooms, two dedicated parking bays and comes with the added benefit of no transfer duty, making it a fantastic investment opportunity.

With a reliable tenant in place until April 2025, you can enjoy immediate rental income while planning for your future.

Plus, for pet lovers, this unit allows pets with body corporate approval, letting you bring your furry friends along.

### Features

<b>Pets Allowed</b>	Yes				
<b>Interior</b>		<b>Exterior</b>		<b>Sizes</b>	
Bedrooms	2	Carports / Parkings	2	Floor Size	69m <sup>2</sup>
Bathrooms	1	Security	Yes		
Kitchens	1	Pool	Yes		
Recep. Rooms	2	Views	False		
Furnished	No				