

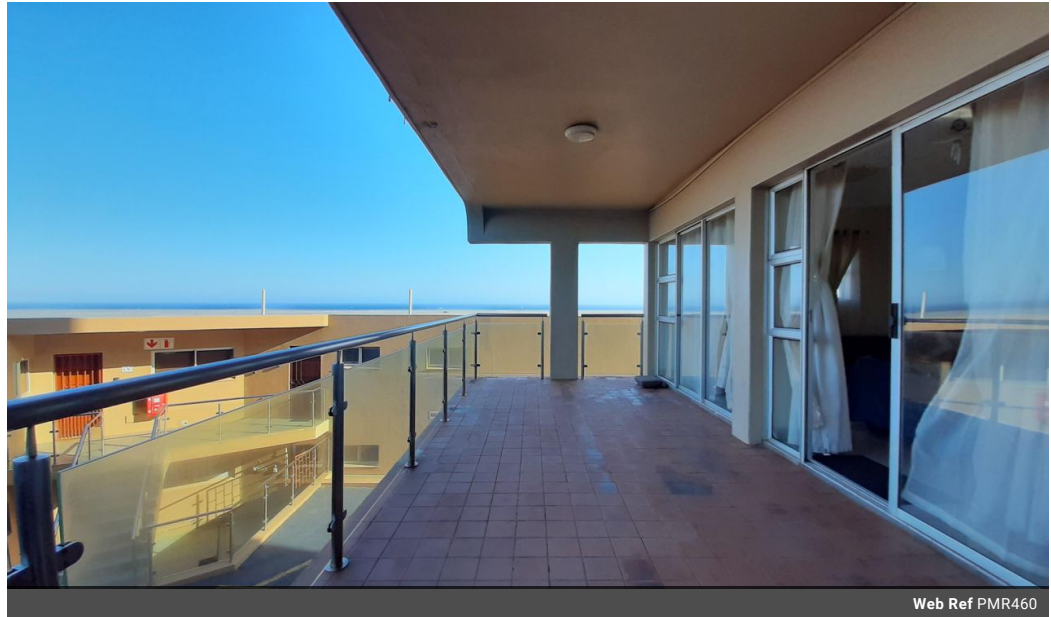


Una van Jaarsveld
 Non-Principal Property Practitioner
 Registered with PPRA (FFC 115 789 4)
 0832824495
 una.van@kwsa.co.za

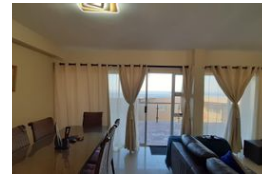
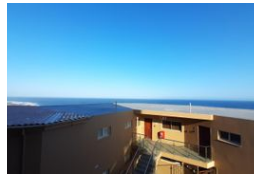
Contact Dolphin Coast

032 9461226

Douglas Crowe Drive, Ballito, 4420 - 14 Silverstone Way



Web Ref PMR460



R2,495,000



Monthly Bond Repayment R25,753.10
 Calculated over 20 years at 11% with no deposit.

Transfer Costs R115,320.00 **Bond Costs** R38,415.00
 These calculations are only a guide. Please ask your conveyancer for exact calculations.

Monthly Levy R2,667.2 **Monthly Rates** R1,238.8

Magnificent Hidden Treasure With Stunning Sea Views.

Unique in many ways, this Northeast-facing modern three-bedroom apartment is set in a quiet and private position, where you can enjoy spectacular sunrises from the comfort of your balcony.

The open-plan living area is designed to maximize the spectacular sea views and promote easy and relaxed seaside living. The elegant kitchen is spacious and fitted with Caesarstone countertops, Defy electric oven and hob, and ample cabinetry.

All three bedrooms are of decent size, while two bedroom's open onto an undercover balcony with beautiful sea views. The main bedroom has ample cubits and an en-suite bathroom.

The secure complex rarely gets load-shedding and has a communal swimming pool and braai area, manicured gardens, and direct access to the beach.

A relaxed lifestyle awaits you. Call us today to schedule a private...

Features

Interior		Exterior		Sizes	
Bedrooms	3	Carports / Parkings	1	Floor Size	136m ²
Bathrooms	2	Security	Yes		
Kitchens	1	Pool	Yes		
Recep. Rooms	2	Views	True		
Furnished	No				

Extras

Breathtaking Sea Views, Extra Large Balcony, Direct Access to the beach, Private, Security, Communal Swimming Pool

