

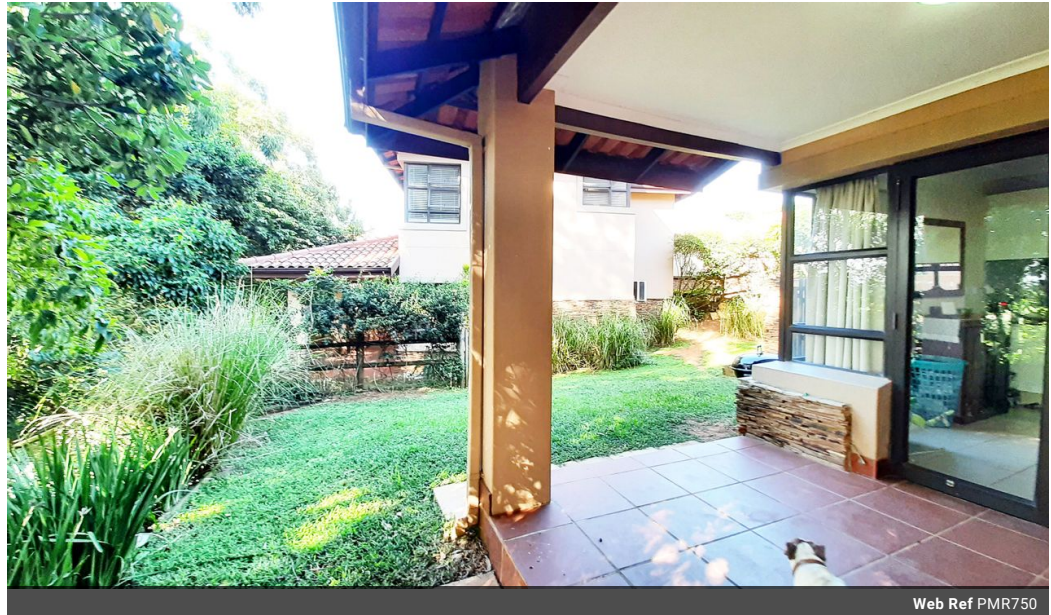


Una van Jaarsveld
 Non-Principal Property Practitioner
 Registered with PPRA (FFC 115 789 4)
 0832824495
 una.van@kwsa.co.za

Contact Dolphin Coast

032 9461226

Douglas Crowe Drive, Ballito, 4420 - 14 Silverstone Way



Web Ref PMR750



R2,950,000

 3  2.5  2

Monthly Bond Repayment R30,449.56
 Calculated over 20 years at 11% with no deposit.

Transfer Costs R156,055.00 **Bond Costs** R42,185.00
 These calculations are only a guide. Please ask your conveyancer for exact calculations.

Monthly Levy R2,021.2 **Monthly Rates** R1,652 **Sectional Title Levy** R1,649.8

Exquisite Property in Hilltop Estate

Welcome to this stunning property located in the peaceful Hilltop Estate.

This modern home boasts expansive windows that illuminate the spacious living area, seamlessly connecting the lounge, dining room, and stylish kitchen. The kitchen features granite countertops, ample cabinetry, and space for two plumbed appliances, perfect for culinary enthusiasts.

Step outside and discover a large undercover patio and enclosed garden area, providing a tranquil retreat for outdoor enjoyment. Upstairs, three bedrooms await, with the main bedroom featuring an en-suite bathroom for added comfort and convenience.

Additional features include air-conditioners in the main bedroom and lounge, ensuring year-round comfort, while a double automated garage offers secure parking. This home is pet-friendly for two medium-sized dogs with HOA...

Features

Pets Allowed Yes

Interior
 Bedrooms 3
 Bathrooms 2.5
 Kitchens 1
 Recep. Rooms 2
 Furnished No

Exterior
 Garages 2
 Security Yes
 Pool No
 Views True

Sizes
 Floor Size 177m²

Extras

24 Hour Access Accommodation Air Conditioner Bath, Toilet and Basin Built in Wardrobes
 Covered Covered Patio Double Storey Garden Electric Garage