



Una van Jaarsveld

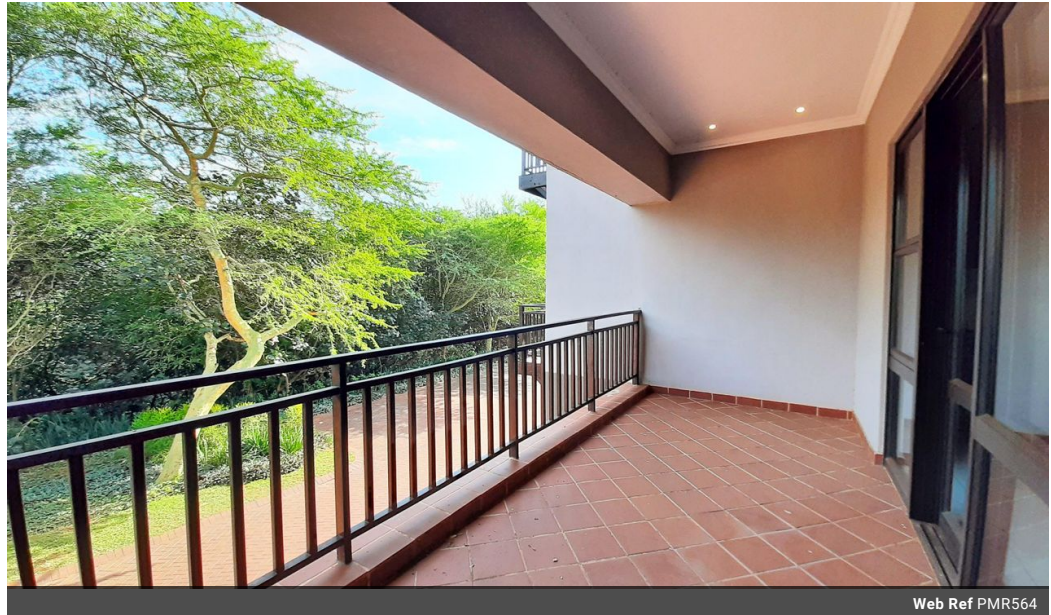
Non-Principal Property Practitioner
Registered with PPRA
(FFC 115 789 4)

0832824495
una.van@kwsa.co.za

Contact Dolphin Coast

032 9461226

Douglas Crowe Drive, Ballito, 4420 - 14
Silverstone Way



Web Ref PMR564



R2,650,000

 3  2  2

Monthly Bond Repayment R27,352.99
Calculated over 20 years at 11% with no deposit.

Transfer Costs R129,887.00 **Bond Costs** R40,300.00
These calculations are only a guide. Please ask your conveyancer for exact calculations.

Monthly Levy R2,021.2 **Monthly Rates** R1,500 **Sectional Title Levy** R2,000

QUIET, SAFE AND TRANQUILL.

Experience tranquillity in this stunning three-bedroom apartment with greenbelt views. The warm interior invites you to bask in the sun and enjoy the serene surroundings.

The open-plan living area seamlessly connects the kitchen, lounge, and dining room, leading to an undercover balcony for entertaining. Modern layouts and contemporary finishes create a clean and sophisticated ambience. The elegant kitchen features granite countertops, a kitchen island, and ample cupboard space.

The main bedroom boasts a balcony with views, built-in cupboards, and a spacious en-suite bathroom. Ceiling fans ensure comfort in all bedrooms and the lounge. This apartment includes a tandem garage for two cars and extra storage.

The apartment is in a secure estate with amenities like a clubhouse, swimming pool, and manicured gardens. Don't...

Features

Interior		Exterior		Sizes	
Bedrooms	3	Garages	2	Floor Size	124m ²
Bathrooms	2	Carports / Parkings	1		
Kitchens	1	Security	Yes		
Recep. Rooms	2	Pool	Yes		
Furnished	No	Views	True		

Extras

Communal Swimming Pool Secure Estate Ceiling Fans

