



Una van Jaarsveld
 Non-Principal Property Practitioner
 Registered with PPRA (FFC 115 789 4)
 0832824495
 una.van@kwsa.co.za

Contact Dolphin Coast

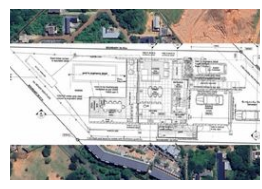
032 9461226

Douglas Crowe Drive, Ballito, 4420 - 14 Silverstone Way



SOLE MANDATE

Web Ref PMR768



R1,200,000

Monthly Bond Repayment R12,386.26
 Calculated over 20 years at 11% with no deposit.

Transfer Costs R32,749.00 **Bond Costs** R25,220.00
 These calculations are only a guide. Please ask your conveyancer for exact calculations.

Monthly Levy R2,885 **Monthly Rates** R988

Piece of Land with Approved Plans in Tranquil Estate

This vacant plot in the serene Elaleni Coastal Forest Estate presents an exceptional opportunity to embrace coastal living. The lush green surroundings promise a beautiful backdrop for your dream home. The estate boasts exclusive amenities such as a beach clubhouse, business centre, green parks, walking paths, and a leisure centre with a 25m training pool, splash pool, water slide, and spacious pool area with pizza oven and braai pods. Future amenities include paddle courts, cricket nets, jungle gyms, and restaurants. Outdoor facilities at Elaleni include trails, a forest boardwalk, beach access, and fresh garden produce. The Beach Club provides entertainment space, braai pods, sun loungers, and parking. Residents can enjoy the Forest Clubhouse with its viewing deck, glassed studio, and hammock. Don't miss the opportunity to...

Features