

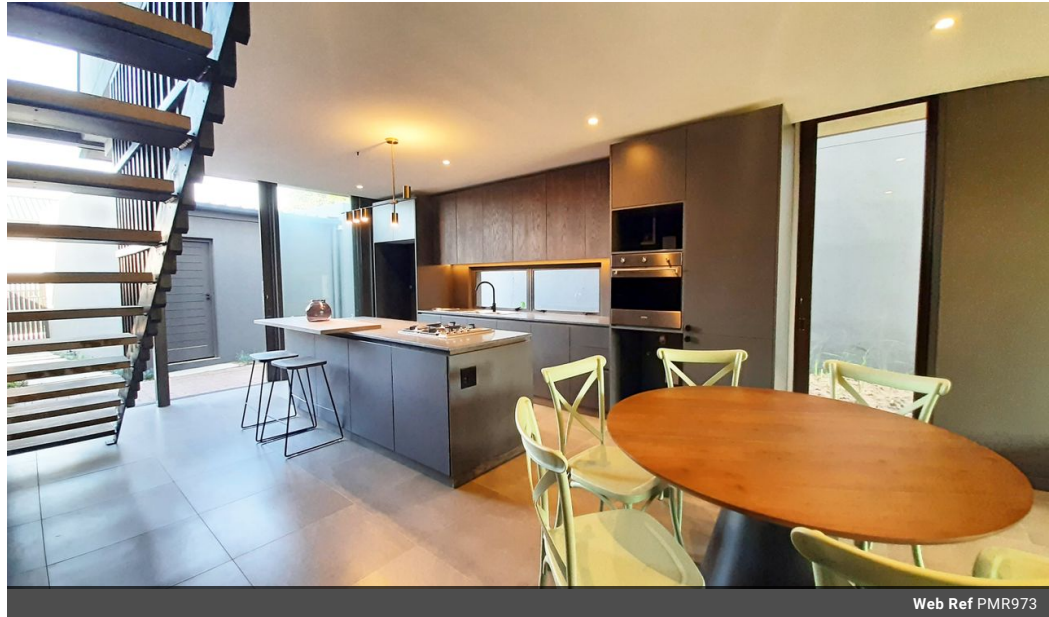


Desiré Momplé
0605874148
desire.momple@kwsa.co.za

Contact Dolphin Coast

032 9461226

Douglas Crowe Drive, Ballito, 4420 - 14
Silverstone Way



Web Ref PMR973



R3,800,000



Monthly Bond Repayment R39,223.16
Calculated over 20 years at 11% with no deposit.

Transfer Costs R256,882.00 **Bond Costs** R49,725.00

These calculations are only a guide. Please ask your conveyancer for exact calculations.

Monthly Levy R2,885 **Monthly Rates** R1,650

Discover Your Dream Home in The Woods at Elaleni

Discover this stunning, newly built, modern semi-detached dwelling nestled within the serene enclave of The Woods at Elaleni Coastal Forest Estate.

Step into an expansive open-concept living space harmoniously blending the kitchen, dining, and lounge areas. Step outdoors to uncover a generous patio and landscaped garden, offering an idyllic sanctuary for unwinding.

The well-equipped kitchen showcases a central island, ample storage, and a sleek Smeg gas hob. Ascend to the upper level to find three generously sized bedrooms. The primary suite boasts an en-suite, while the remaining bedrooms share a tastefully designed bathroom.

Highlights include a secure lock-up garage and privileged access to the residents' clubhouse, complete with a refreshing pool. Don't let this exceptional opportunity slip away.

Arrange a private...

Features

Pets Allowed Yes

Interior
Bedrooms 3
Bathrooms 2
Kitchens 1
Recep. Rooms 2
Furnished No

Exterior
Garages 2
Carports / Parkings 2
Security Yes
Pool Yes
Views False

Sizes
Floor Size 152m²