



Una van Jaarsveld
 Non-Principal Property Practitioner
 Registered with PPRA (FFC 115 789 4)
 0832824495
 una.van@kwsa.co.za

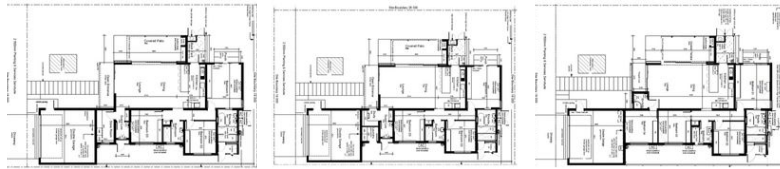
Contact Dolphin Coast

032 9461226

Douglas Crowe Drive, Ballito, 4420 - 14 Silverstone Way



Web Ref PMR919



R5,090,000



Monthly Bond Repayment R52,538.39
 Calculated over 20 years at 11% with no deposit.

Transfer Costs R417,707.00 **Bond Costs** R65,785.00
 These calculations are only a guide. Please ask your conveyancer for exact calculations.

Monthly Levy R2,885 **Monthly Rates** R1,596

Upscale Residential Development Offering Luxurious Living

No Transfer Duty - Directly from the Developer!

Welcome to The Stables, a charming village that's part of the beautiful Elaleni community! Here, you can create lasting memories for your family in a home surrounded by an edible landscape filled with citrus trees and lovely communal gardens.

The Stables Village is an upscale residential development that offers a luxurious living experience. We have some fantastic home options for you:

- **2-bedroom homes (168 sq m)** starting from R4,350,000 to R4,613,000
- **3-bedroom homes (192 sq m)** starting from R4,707,000 to R5,022,000 with two new layout options
- **4-bedroom homes (216 sq m)** starting from R5,090,000 to R5,405,000 featuring a brand new layout option

All homes are ready to move into and beautifully designed by the talented North Coast architect Julia...

Features

Pets Allowed	Yes			
Interior		Exterior		Sizes
Bedrooms	4	Garages	2	Floor Size
Bathrooms	3	Carports / Parkings	2	Land Size
Kitchens	1	Security	Yes	216m ²
Recep. Rooms	2	Pool	No	504m ²
Furnished	No	Views	False	