



**Una van Jaarsveld**  
 Non-Principal Property Practitioner  
 Registered with PPRA (FFC 115 789 4)  
 0832824495  
 una.van@kwsa.co.za

Contact Dolphin Coast

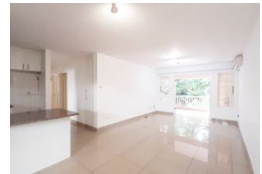
032 9461226

Douglas Crowe Drive, Ballito, 4420 - 14 Silverstone Way

**SOLD**



Web Ref PMR879



**R2,000,000**

 3  2  1

**Monthly Bond Repayment** R20,643.77

Calculated over 20 years at 11% with no deposit.

**Transfer Costs** R75,206.00 **Bond Costs** R32,760.00

These calculations are only a guide. Please ask your conveyancer for exact calculations.

**Monthly Levy** R1,944 **Monthly Rates** R1,256

### Charming Three-Bedroom Haven in Ballito's Premier Suburb

Welcome to this enchanting three-bedroom, first-floor apartment nestled in the highly sought-after suburb of Ballito, brimming with character and privacy this residence offers a delightful living experience.

As you step inside, a generously proportioned open-plan layout unfolds seamlessly, connecting the kitchen, dining area, and lounge. The flow extends to a spacious undercover balcony, providing stunning views of the lush garden and mature trees, creating a serene atmosphere. The kitchen boasts space and functionality, featuring granite countertops and ample cupboard space.

The accommodation comprises three well-sized bedrooms, with the main bedroom enjoying the luxury of an en-suite bathroom. The lounge is equipped with air conditioning, ensuring comfort throughout. The property also includes a convenient lock-up garage...

### Features

Interior		Exterior		Sizes	
Bedrooms	3	Garages	1	Floor Size	118m <sup>2</sup>
Bathrooms	2	Carports / Parkings	1		
Kitchens	1	Security	Yes		
Recep. Rooms	2	Pool	Yes		
Furnished	No	Views	False		