



Una van Jaarsveldt
 Non-Principal Property Practitioner
 Registered with PPRA (FFC 115 789 4)
 0832824495
 una.van@kwsa.co.za

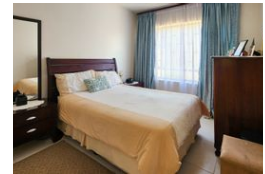
Contact Dolphin Coast

032 9461226

Douglas Crowe Drive, Ballito, 4420 - 14 Silverstone Way



Web Ref PMR965



R2,150,000

 3  2  1

Monthly Bond Repayment R22,192.05
 Calculated over 20 years at 11% with no deposit.

Transfer Costs R86,947.00 **Bond Costs** R34,625.00

These calculations are only a guide. Please ask your conveyancer for exact calculations.

Monthly Levy R4,003.0 **Monthly Rates** R1,111.1

Welcome to Your Ground Floor Gem in a Secure Estate!

Prepare to fall in love with this charming ground-floor, walk-in apartment that combines contemporary comfort and style!

As you step inside, you'll be greeted by an inviting open-plan layout that seamlessly connects the kitchen, lounge, and dining area, creating a warm and welcoming atmosphere. Imagine relaxing on the spacious patio while soaking in the breathtaking views of the surrounding forest! The patio opens up to a beautifully maintained communal garden with lush lawns and stunning shady trees—perfect for enjoying al fresco dining with friends and family.

This lovely home features three cosy bedrooms, each equipped with ceiling fans and built-in cupboards for tidiness and comfort. The main bedroom serves as a true retreat, complete with a full en-suite bathroom. The second and third bedrooms share a bathroom fitted...

Features

Interior		Exterior		Sizes	
Bedrooms	3	Garages	1	Floor Size	167m ²
Bathrooms	2	Carports / Parkings	1		
Kitchens	1	Security	Yes		
Recep. Rooms	2	Pool	Yes		
Furnished	No	Views	False		