

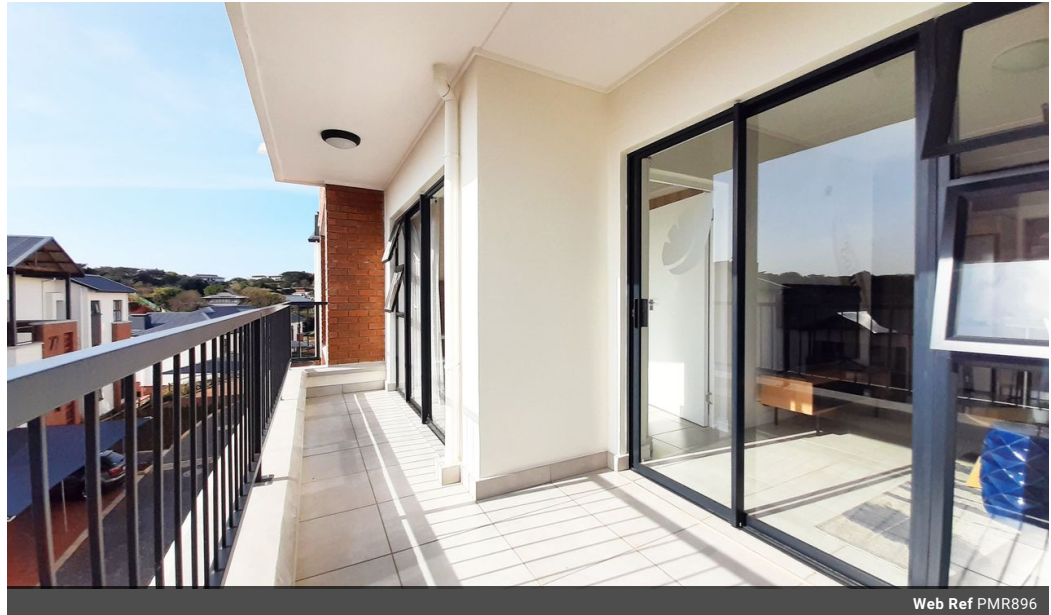


Una van Jaarsveld
 Non-Principal Property Practitioner
 Registered with PPRA (FFC 115 789 4)
 0832824495
 una.van@kwsa.co.za

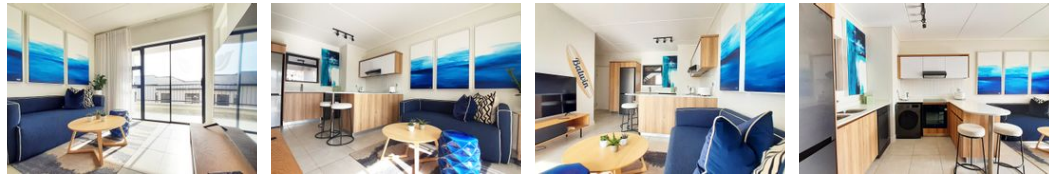
Contact Dolphin Coast

032 9461226

Douglas Crowe Drive, Ballito, 4420 - 14 Silverstone Way



Web Ref PMR896



R1,295,000



Monthly Bond Repayment R13,366.84
 Calculated over 20 years at 11% with no deposit.

Transfer Costs R37,467.00 **Bond Costs** R27,105.00
 These calculations are only a guide. Please ask your conveyancer for exact calculations.

Monthly Levy R1,300 **Monthly Rates** R800

Charming Ballito Hills Apartment with Modern Amenities.

Welcome to Ballito Hills, where luxury meets convenience! This middle-floor apartment is a gem, radiating warmth and charm. Its open-plan design seamlessly connects the kitchen and lounge area, leading to a spacious balcony with a built-in braai. The kitchen boasts elegant high gloss panels, Caesarstone countertops, and state-of-the-art appliances.

The accommodation includes one decent-sized bedroom with built-in cupboards and sliding doors that open onto the balcony.

The apartment has a storage room, two undercover parking bays, and ample visitor parking. The estate offers meticulously maintained gardens, a gym, a swimming pool, a paddle court, and more.

Unparalleled security ensures peace of mind, for convenience the estate is close to shopping centres, schools and hospitals.

Please note that the displayed pictures are...

Features

Pets Allowed	Yes				
Interior		Exterior		Sizes	
Bedrooms	1	Carports / Parkings	1	Floor Size	57m ²
Bathrooms	1	Security	Yes		
Kitchens	1	Pool	Yes		
Recep. Rooms	1	Views	False		
Furnished	No				