



**Una van Jaarsveldt**

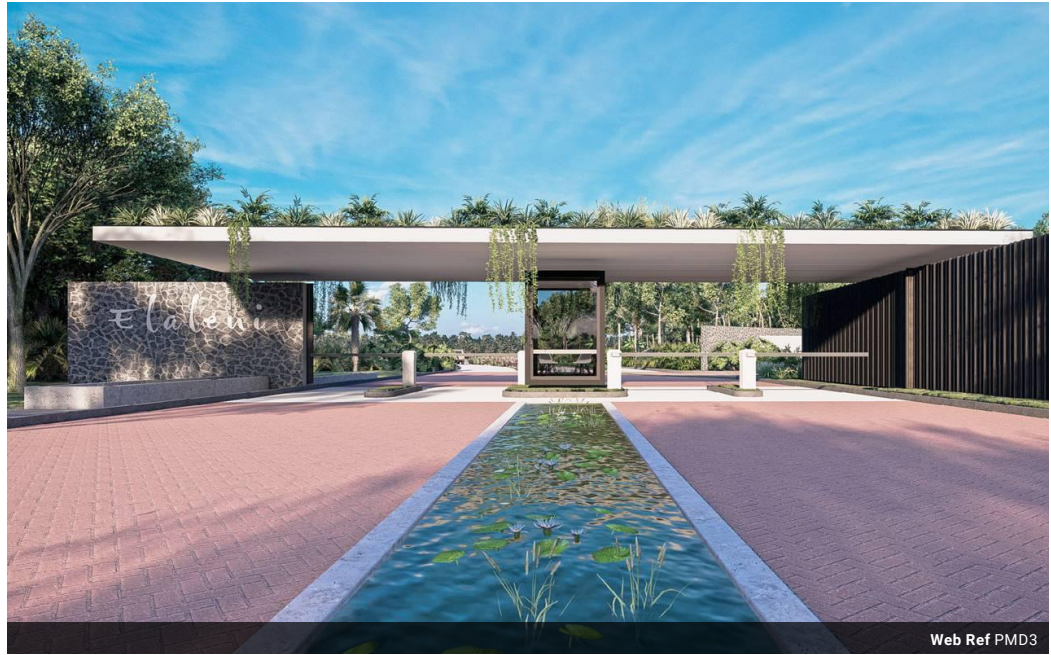
Non-Principal Property Practitioner  
Registered with PPRA  
(FFC 115 789 4)

0832824495  
una.van@kwsa.co.za

Contact Dolphin Coast

032 9461226

Douglas Crowe Drive, Ballito, 4420 - 14  
Silverstone Way



Web Ref PMD3



## Elaleni Lifestyle Estate



**Houses (10)**  
From R4,228,500  
Size from 168m<sup>2</sup> to 216m<sup>2</sup>

**Vacant Land (20)**  
From R1,495,000  
Size from 901m<sup>2</sup> to 4,593m<sup>2</sup>

Created by Nature - Built for Life

Elaleni Lifestyle Estate is the next evolution of modern sustainable estate living.

This residential estate is like no other in the region, it offers a truly unique way of life genuinely driven by living off the earth. Here you can live the way you want to whether that means growing fruit and coffee, cultivating vegetables, raising lay hens or having a gaggle of geese in your yard.

As part of Lifestyle Estate, you are making a commitment to live partially off-grid in an estate deliberately designed around this way of living.

### Features

- ✓ The Acres - 10 PREMIUM PLOTS FROM R 3.835 MILLION
- ✓ The Orchards - 21 FREEHOLD SITES FROM R 1.495 MILLION - VIEWS AND AVENUES OF ORCHARD TREES
- ✓ Elaleni Beach Club
- ✓ 2 lush paddocks and several open-air paddocks
- ✓ Planted fruit orchards and coffee plantation
- ✓ The Stables Village 43 - 2,3 & 4 bedroom HOMES FROM R 3.75 MILLION
- ✓ Dedicated manned Gatehouse
- ✓ Over 5km of walk, run and ride trails which move through wetlands, forest and dams
- ✓ Produce packhouse
- ✓ Community Wellness Centre with ...

