



**Una van Jaarsveld**  
 Non-Principal Property Practitioner  
 Registered with PPRA (FFC 115 789 4)  
 0832824495  
 una.van@kwsa.co.za

Contact Dolphin Coast

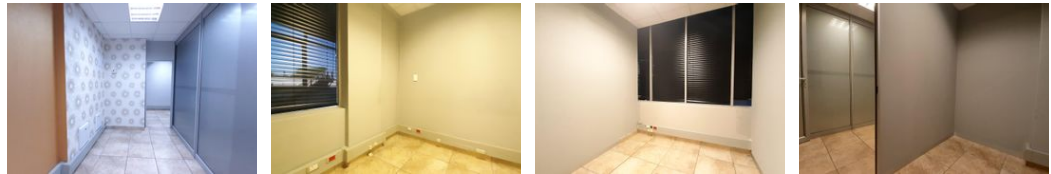
032 9461226

Douglas Crowe Drive, Ballito, 4420 - 14 Silverstone Way

UNDER OFFER



Web Ref PMC17



R995,000

Monthly Levy R1,593.9 Excl. VAT

Monthly Rates R2,555.9 Excl. VAT

1 0

PRIME Office Space For Sale.

This First-Floor office is in a secure, sought-after office park at Silverstone Way situated behind the Lifestyle Centre. This highly visible office building allows for great exposure for your business.

Silverstone Way offers visitor parking for your clients.

### Features

<b>Building Name</b>	Silverstone Way				
<b>Zoning</b>	Commercial				
<b>Interior</b>		<b>Exterior</b>		<b>Sizes</b>	
Air Conditioning	Yes	Security	Yes	Floor Size	77m <sup>2</sup>
		Basement Parkings	1		

